



Cadence®



LAPAROSCOPIC SPECIMEN RETRIEVAL DEVICE

INTENDED USE

The Cadence® Specimen Retrieval Device is designed to assist with specimen retrieval during a laparoscopic surgical procedure.

WARNINGS

- This device is for single use only and can not be reused or re-sterilised.
Do not use if package is opened or damaged.
A complete understanding of techniques and principles involved in electrosurgical procedures is necessary to avoid burn or shock hazard to patient and/or operator.
Endoscopic procedures must be performed only by surgeons with adequate training and knowledge of these procedures.
In addition, medical literature should be consulted regarding techniques, hazards, contraindications and complications prior to the performance of these procedures.
If bag with specimen can not pass through incision easily, it is recommended to either increase the incision before removing the bag or dissect the sample into smaller pieces.

CONTRAINDICATIONS

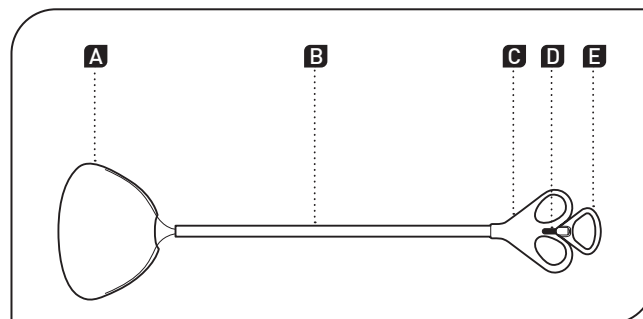
This device is intended for use when endoscopic techniques are contraindicated, such as perforation, peritonitis, known intra-abdominal injury, complications of previous surgery, shock, evisceration, or abdominal wall dehiscence.

USER INSTRUCTIONS

- 1. The non-sterile nurse peels open the packaging using appropriate aseptic technique and presents the device inside to the sterile instrument nurse.
2. The sterile instrument nurse removes the device using aseptic technique. The non-sterile nurse can divert the packaging for appropriate recycling.
3. The sterile instrument nurse hands the device to the surgeon without further preparation.
4. The surgeon should insert the device into a laparoscopic port and deploy the specimen bag by pushing the deployment ring with the thumb, towards the handle until it stops.
5. The surgeon should observe that the specimen bag is open and carefully place the specimen into the bag.
6. Once the specimen is contained, the surgeon should pull the deployment ring back to close the bag, while maintaining hold of the bag.
7. To release the specimen bag from the device, the surgeon should lift the tab over the hook on top of the deployment ring, then pull the device away while maintaining hold of the bag.
8. The tab and string will travel through then device and the specimen bag will remain in situ. The device can be disposed of.
9. The surgeon should secure the string then carefully remove the specimen bag containing the specimen from the patient and continue with the surgical procedure.

ADDITIONAL NOTES

Once the specimen is contained in the specimen bag, it is recommended that the surgeon pull the deployment ring back until it stops to ensure that the specimen bag is held closed before releasing the tab. There is no requirement to cut the string.

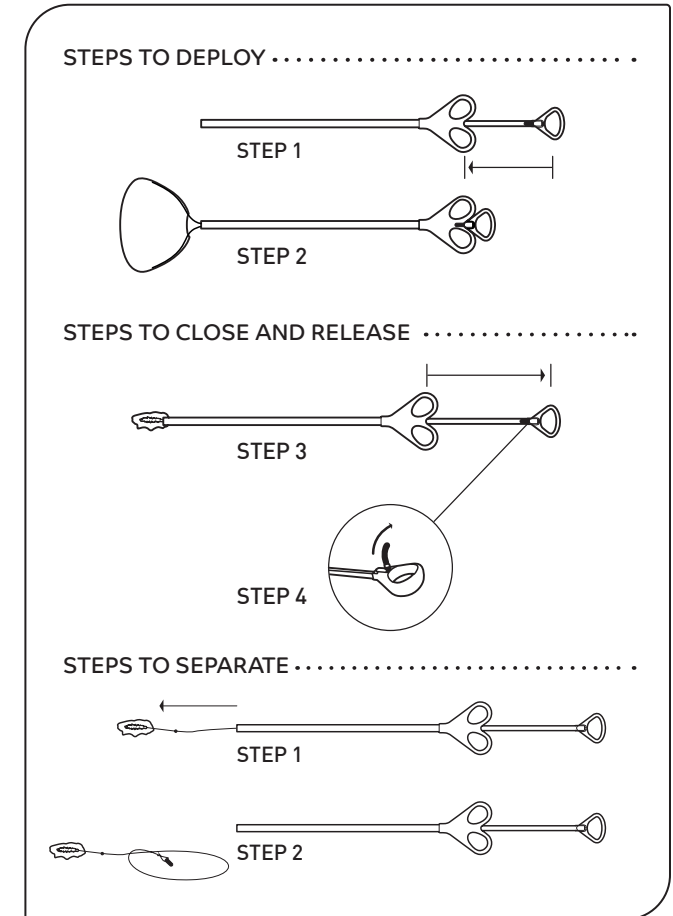


A - Specimen Bag B - Device C - Handle D - Tab E - Deployment Ring

ONE HAND DEPLOYMENT

The Cadence® Specimen Retrieval Device is deployable with one hand. Place your thumb in the deployment ring and two fingers in the handle rings. Push forward with your thumb to deploy.

USE SEQUENCE



Multigate Medical Products
27 Llewellyn Avenue Villawood
NSW 2163 Australia
T +61 (0)2 8718 2888
F +61 (0)2 8718 2889
E enquiries@multigate.com.au
www. multigate.com.au

Multigate Co., Ltd.
7 Lanjiang Rd. 312000
Shaoxing China
EC REP RFX+Care International A/S
Bakkegaardsvej
408 3050 Humlebaek
Denmark