

MULTIGATE CubeWare® 2.0



Designed to do
more with less

THE LATEST EVOLUTION IN OUR HOLLOWWARE RANGE



Small Change, Big Impact

Our approach to continuous improvement has taught us that it's often the small changes that deliver the biggest impacts — Small Change, Big Impact is a philosophy we apply when reviewing our products, services and supply arrangements.

We evaluate potential changes against a multi-criteria framework to ensure that they are well considered, balanced and that they deliver the highest overall value possible for all stakeholders.



The hollowware evolution



1997 Multigate Traditional Hollowware

Hollowware, as we know it, has been used in hospitals for many decades with little change to materials or design.



2016 CubeWare®

Our revolutionary modular, space saving CubeWare® was first introduced to the market back in 2016. Since then it has been embraced by leading Australian hospitals.



2024 CubeWare®2.0

The latest evolution in our hollowware: CubeWare® 2.0 has been optimised to reduce its environmental impact, deliver improved features and benefits, and provide more range flexibility with new sizes and configurations to choose from — all at no extra cost to you.

Reduce environmental impact



Optimised to reduce its environmental impact — our latest innovation, CubeWare® 2.0 is an evolution in our hollowware line. With a focus firmly on the planet we have designed CubeWare® 2.0 to deliver impact reductions across all key indicators measured.



Less waste¹

CubeWare® 2.0 has been designed to achieve more with less. It uses up to 42% less plastic than our first generation CubeWare® hollowware.



Reduced impact²

Less plastic and a less energy-intensive manufacturing process combine to significantly reduce CubeWare® 2.0's environmental footprint.



Recyclable³

CubeWare® 2.0 hollowware is made from 100% polypropylene (PP), a recyclable and common plastic used in hospital products.

CHANGE IN WEIGHT

UP TO **-42%**⁴



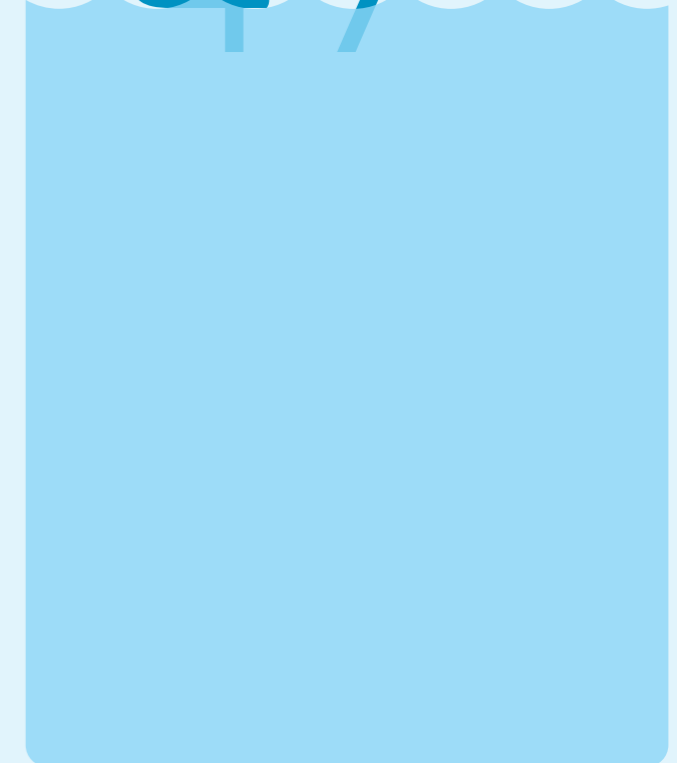
CHANGE IN GREENHOUSE GAS EMISSIONS

UP TO **-49%**⁵



CHANGE IN WATER USAGE

UP TO **-47%**⁶



Climate Neutral



As part of our commitment to better product stewardship, all CubeWare® 2.0 hollowware sold to Australian customers are supplied Climate Neutral.

When you purchase CubeWare® 2.0 hollowware, you are helping to support approved, registered projects to create additional resources to combat climate change.⁷



MULTIGATE OFFSET THE CRADLE-TO-GRAVE GREENHOUSE GAS EMISSIONS OF EVERY PIECE OF CUBEWARE® 2.0 HOLLOWWARE SOLD, WHETHER IT IS SUPPLIED AS A SINGLE ITEM OR IN A PROCEDURE PACK.



Renewal Energy Projects Solar | Wind | Hydro | Biogas / Biomass

We believe in supporting projects that can deliver significant environmental and social benefit in countries where we create impact.

By supporting renewable energy projects in China, Multigate helps to speed up their move away from fossil fuels, reducing greenhouse gas emissions and improving air quality which delivers health benefits to local communities.

Multigate and our customers also directly benefit from China having a cleaner energy grid, as this will reduce the climate change impact of products made there over time.



Carbon Removal Projects Biodiversity | Forestry | Regeneration

Forests play a critical part in combating climate change by removing carbon from the atmosphere and helping to clean and cool the air.

By supporting biodiversity and reforestation projects, Multigate helps to create, restore and protect woodland habitats, contributing to better land management and conservation of native fauna and wildlife species.

Many projects we support also deliver cultural, social and economic benefits to local indigenous communities.



Improved performance



Well considered yet simple design updates — by adjusting key areas of CubeWare® to deliver enhanced features and benefits, we are able to deliver an overall improved performance.



Space saving⁸

Addressing concerns around limited instrument table space, CubeWare® 2.0 rectilinear design can reduce space by up to 30% over our traditional hollowware range.



Tactile indicators

Step graduations clearly indicate fluid volume whilst improving structural strength and integrity.



Improved design

Rounded corners distribute forces more evenly than original CubeWare® whilst nesting hooks provides easier separation.



Step graduations improves strength

Rectilinear shape reduces table space by up to 30%⁸

Rounded corners distribute forces more evenly

Nesting hooks provides easier separation

Volume indicators clear and tactile

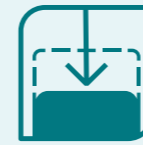
STEP GRADUATIONS

NESTING HOOKS

VOLUME INDICATORS

Precision Pack®

Improving performance with every step — addressing clinician concerns over bulk and complexity, we developed a packing system that ensures our PrecisionPack® custom procedure packs are compact, simple to use, easy to identify and store.



Space saving CubeWare®
CubeWare® 2.0 can reduce the bulk of packs by up to 47%*, returning precious space to storeroom shelves.



Improved shape & stability
CubeWare® 2.0 rectilinear design improves the shape and stability of packs allowing them to be stacked with more confidence. PrecisionPack®s can be securely placed on their back or side.



Packing methodology
Combines with CubeWare® to further improve the size, shape and stability of our packs and contributes to a more controlled un-pack during theatre setup, reducing the risk of items falling.



Experience organised
We know how hard it can be to find the pack you are looking for even if it is placed in the correct location. PrecisionPack® can help bring order to your storeroom.



Front-facing colour coded label
Supports quick pack selection by making packs easier to locate on shelf and critical information easy to find. Each surgical specialty is represented by a different colour for easy identification.



Dual barcode tracking
Dual bar codes enable you to better manage your records around devices used for the procedure.



CubeWare® 2.0 range

Better for you, better for the planet



Bowls

Single use bowls are utilised in the operating theatre for a range of applications. Functionally designed to hold fluids and strong enough to hold surgical instruments.

Our non-sterile bowl range consists of 11 different bowl sizes with volumes between 150ml to 7.5L.



NON-STERILE BOWL RANGE

PRODUCT DETAILS	Bowl (T) 150 mL	Bowl (T) 250 mL	Bowl (T) 400 mL	Bowl (T) 500 mL	Bowl (T) 1.0 L	Bowl (T) 1.5 L	Bowl (T) 2.5 L	Bowl (T) 3.5 L	Bowl (T) 5.0 L	Bowl (T) 6.0 L	Bowl (T) 7.5 L
	99 x 81 x 44 mm	114 x 97 x 51 mm	131 x 109 x 60 mm	140 x 118 x 64 mm	175 x 142 x 79 mm	199 x 165 x 89 mm	237 x 195 x 106 mm	264 x 221 x 117 mm	321 x 240 x 131 mm	339 x 256 x 141 mm	360 x 277 x 150 mm
WEIGHT	10 g	15 g	18 g	19 g	36 g	56 g	80 g	101 g	127 g	152 g	180 g
CODE	HAA-0015	HAA-0016	HAA-0017	HAA-0018	HAA-0019	HAA-0020	HAA-0021	HAA-0022	HAA-0023	HAA-0024	HAA-0025
GHG R	26 gC02e	40 gC02e	44 gC02e	49 gC02e	92 gC02e	145 gC02e	199 gC02e	271 gC02e	342 gC02e	392 gC02e	461 gC02e
GHG D&L	48 gC02e	73 gC02e	83 gC02e	91 gC02e	172 gC02e	269 gC02e	376 gC02e	494 gC02e	624 gC02e	729 gC02e	859 gC02e
GHG I	72 gC02e	110 gC02e	126 gC02e	138g C02e	260 gC02e	407 gC02e	573 gC02e	743 gC02e	936 gC02e	1,103 gC02e	1,302 gC02e

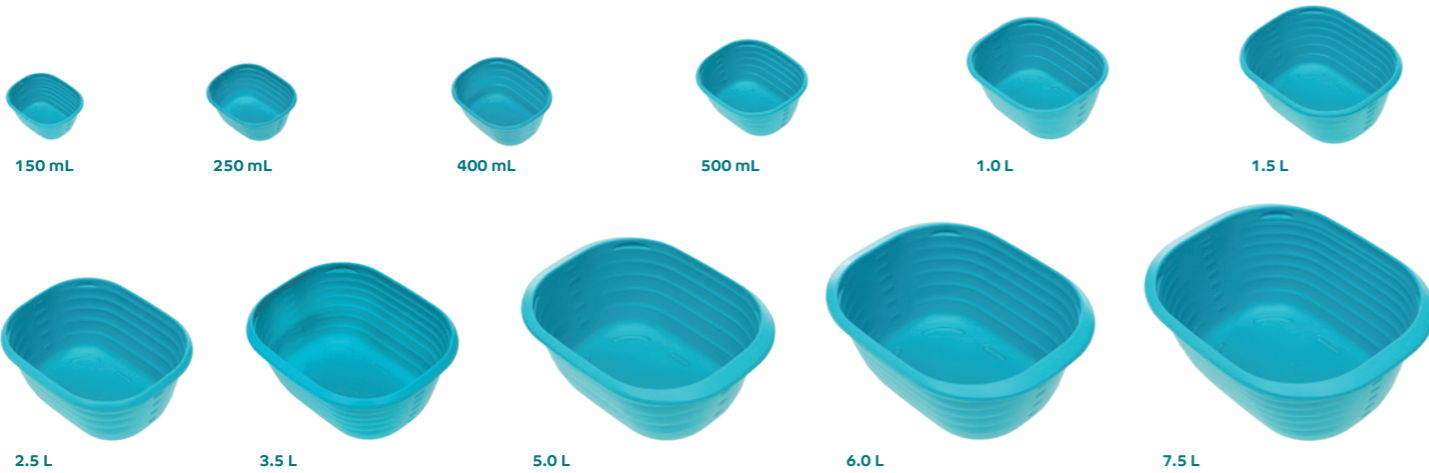


TABLE KEY: (T) Teal, (C) Clear, (Y) Yellow, (GHG) Greenhouse Gas Emissions, (R) Recycle, (D&L) Disinfect & Landfill, (I) Incineration.

BOWL STANDS

Multigate can provide CubeWare® 2.0 customers with single and double bowl stands.

Our free-wheeled universal bowl stands are designed to support both our largest CubeWare® and traditional round bowls.



Trays

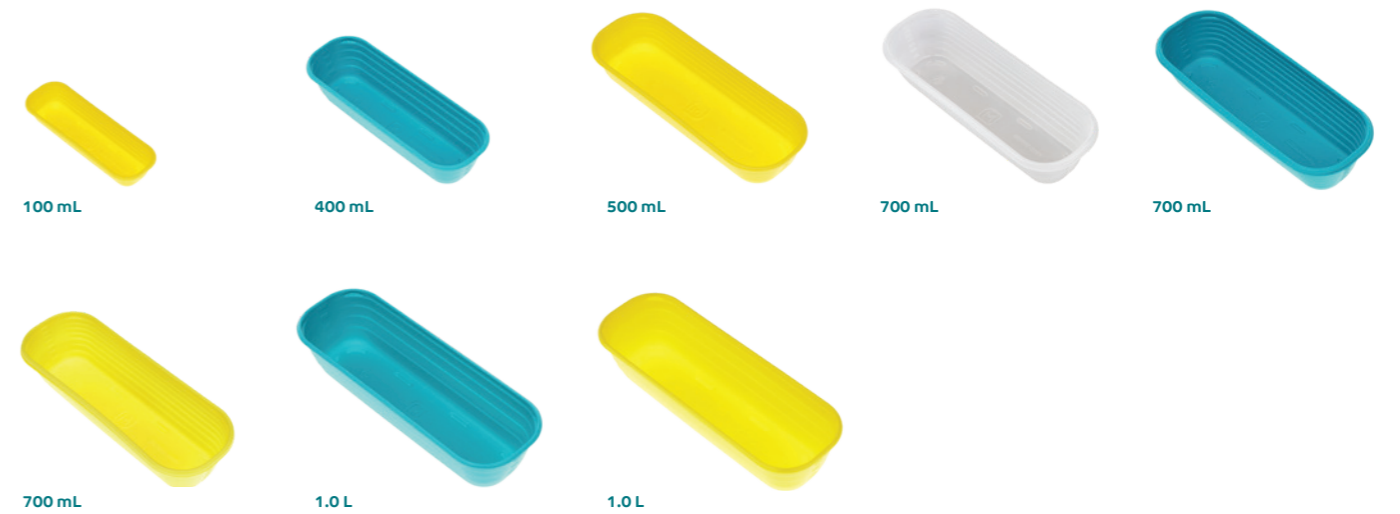
Single use trays are often used in a variety of non-sterile and sterile settings to hold and safely transport consumables required for medical procedures.

We have a range of 4 different sized trays and 3 colours including yellow to adhere with the basic procedures of safe sharp handling.



NON-STERILE TRAY RANGE

PRODUCT DETAILS	Tray (Y) 100 mL	Tray (T) 400 mL	Tray (Y) Shallow 500 mL	Tray (C) 700 mL	Tray (T) 700 mL	Tray (Y) 700 mL	Tray (T) 1.0 L	Tray (Y) 1.0 L
	156 x 53 x 26 mm	214 x 77 x 48 mm	254 x 91 x 39 mm	255 x 94 x 55 mm	255 x 94 x 55 mm	255 x 94 x 55 mm	284 x 99 x 63 mm	284 x 99 x 63 mm
WEIGHT	11 g	21 g	28 g	34 g	34 g	34 g	42 g	42 g
CODE	HBA-0014	HBA-0015	HBA-0016	HBA-0017	HBA-0018	HBA-0019	HBA-0020	HBA-0021
GHG R	27 gC02e	52 gC02e	69 gC02e	85 gC02e	85 gC02e	87 gC02e	105 gC02e	105 gC02e
GHG D&L	51 gC02e	99 gC02e	131 gC02e	160 gC02e	160 gC02e	162 gC02e	198 gC02e	198 gC02e
GHG I	78 gC02e	150 gC02e	200 gC02e	244 gC02e	244 gC02e	246 gC02e	301 gC02e	301 gC02e



YOUR SPACE, YOUR WAY

Our new CubeWare® 2.0 range offers new hollowware configurations and sizes, giving you more choice and flexibility over how you setup your table space and more options to use smaller sized variants where practical to reduce your environmental impact.



Kidney Trays

Single use kidney trays are held to the contour of the body and used to collect fluid during an irrigation or washout. Yellow kidney trays are used as a method

of transporting sharps safely to sharps waste containers. A new addition in our CubeWare® 2.0 offering, Kidney trays are available in 3 sizes and colours.



NON-STERILE KIDNEY TRAY RANGE

PRODUCT DETAILS	Kidney Tray (T) 400 mL 196 x 87 x 46 mm	Kidney Tray (T) 700 mL 237 x 106 x 53 mm	Kidney Tray (Y) 700 mL 237 x 106 x 53 mm	Kidney Tray (C) 700 mL 237 x 106 x 53 mm	Kidney Tray (T) 1.0 L 264 x 117 x 61 mm	Kidney Tray (Y) 1.0 L 264 x 117 x 61 mm
WEIGHT	22 g	30 g	30 g	30 g	38 g	38 g
CODE	HCA-0011	HCA-0012	HCA-0013	HCA-0014	HCA-0015	HCA-0016
GHG (R)	55 gC02e	76 gC02e	77 gC02e	77 gC02e	93 gC02e	93 gC02e
GHG (D&L)	104 gC02e	143 gC02e	143 gC02e	143 gC02e	177 gC02e	177 gC02e
GHG (I)	158 gC02e	217 gC02e	217 gC02e	217 gC02e	270 gC02e	270 gC02e

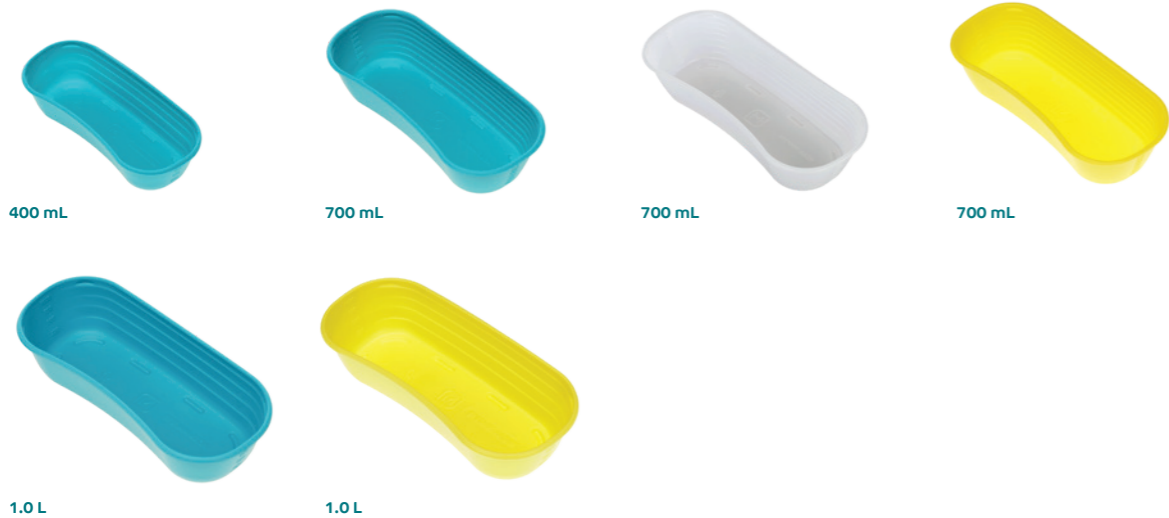


TABLE KEY: (T) Teal, (C) Clear, (Y) Yellow, (GHG) Greenhouse Gas Emissions, (R) Recycle, (D&L) Disinfect & Landfill, (I) Incineration.



ENVIRONMENTAL REPORTS

Get the facts, environmental reports tailored to you — our reports are based on your usage and end of life methods. They show you how much you can reduce your current climate change impact by transitioning your existing hollowware to CubeWare® 2.0. Contact your Multigate BDM to organise a report.

Other Products

A range of CubeWare® 2.0 hollowware products with varying uses and features, developed for use by themselves or in

conjunction with other CubeWare® 2.0 products, such as sharps handling trays, mixing bowls and lids.



OTHER NON-STERILE PRODUCTS

PRODUCT DETAILS	Sharps Tray (Y) 245 x 117 x 57 mm	Gallipot (C) 20-120 mL 75 x 75 x 51 mm	Gallipot (C) 50-250 mL 96 x 96 x 63 mm	Mixing Cup (T) 500 mL 117 x 117 x 72 mm	Lid for Placenta Bowl (N) 266 x 223 x 13.5 mm	Plastic Spatula (T) 290 x 230 x 160 mm	Waste Basin (T) 180.5 x 142.3 x 73.5 mm
PIECE WEIGHT	52 g	8 g	14 g	23 g	55 g	12 g	38 g
CODE	HDA-0003	HEA-0006	HEA-0007	HHA-0002	HYA-0003	HYA-0007	HAC-0003
GHG (R)	126 gC02e	20 gC02e	34 gC02e	57 gC02e	143 gC02e	50 gC02e	479 gC02e
GHG (D&L)	241 gC02e	37 gC02e	65 gC02e	108 gC02e	225 gC02e	76 gC02e	815 gC02e
GHG (I)	369 gC02e	57 gC02e	100 gC02e	164 gC02e	364 gC02e	105 gC02e	1,189 gC02e



RESOURCES SCAN THE QR CODE

Find out more about CubeWare® 2.0 and see the full range on our website by scanning the QR code.



Find out more

multigate.com.au/qr/cw2

Disclaimers & important information

DISCLAIMERS

1. Based on difference in weight between equivalent sized gallipots.
2. Based on comparison LCA data calculated in life cycle assessment (LCA) tool provided by Lifecycles.
3. Hollowware made from 100% polypropylene can be recycled if your hospital has agreements and procedures in place to effectively collect and process these items.
4. Based on difference in weight between equivalent sized gallipots.
5. Based on difference in cradle-to-grave greenhouse gas emissions between equivalent sized gallipots, disposal method recycling.
6. Based on difference in cradle-to-grave water usage between equivalent sized gallipots, disposal method recycling.
7. Multigate purchases carbon credits via Carbon Neutral in approved, registered projects which have been independently assessed and verified as creating additional resources that help combat climate change using avoidance or sequestration means.
8. Based on internal test which compared the area taken up of an equivalent range of Multigate traditional vs CubeWare® 2.0 hollowware.
9. Based on internal testing which compared a custom procedure pack containing traditional hollowware vs same pack with CubeWare® 2.0 hollowware.

IMPORTANT INFORMATION

- Multigate use 3rd party specialists to help us measure our impact, guide our environmental stewardship projects, and validate our carbon neutrality programmes.
- Multigate is committed to providing customers with as accurate & up-to-date Life Cycle Assessment (LCA) information on our products as possible, so they can make better informed purchasing decisions when selecting within our portfolio. Multigate LCA figures are not comparable with other LCA figures unless they were created by Lifecycles using the same methodology, database reference source and version, assumptions etc. to ensure consistency in modelling approach and reported results.
- The LCA modelling tool used to calculate greenhouse gas (GHG) emissions and water usage figures was created by Lifecycles (www.lifecycles.com.au) for Multigate. Unless otherwise stated, all LCA figures are cradle-to-grave, which means they include impacts created across the products' entire life cycle: from the raw materials used in its creation to its disposal. Unless stated, impact figures include the product's piece level packaging and share of carton level related packaging, default disposal method used for non-contaminated plastic packaging is landfill, paper & cardboard is recycling. Transport impacts include allocations for truck movements overseas, international shipping to Sydney, and local truck movements relating to Multigate activities excluding delivery to customers.
- Published figures are based on the best LCA data we have as at May 2026 and they vary from previously published figures. They were generated using V5.0 of our LCA tool which was last updated on 19/12/25 to incorporate the latest changes to best practice, modelling techniques, reference databases (primary reference databases used EcoInvent V3.11 & AusLCI), and information available from various external & internal data sources. Previously published figures were created using older versions of our LCA tool which utilised EcoInvent V3.09, V3.08 or V3.07 as well as other older data sources.
- Based on modelling for Australian products sold to Australian customers. Results may vary slightly for NZ products sold to NZ customers.
- Multigate LCA data is protected by copyright and cannot be reproduced or adapted without prior written permission from Multigate.

IP Protected Product

Intellectual Property rights such as patents, patent applications, registered designs, trademarks, etc. apply to this product group. **See website for details.**



For more information:
multigate.com.au
or call **1800 023 420**
(Australia)

multigate.co.nz
or call **0800 880 013**
(New Zealand)

Empowering
performance
since 1986



When printing this item we
use 100% recycled paper
(whenever possible) and offset
its greenhouse gas emissions
to make it climate neutral.